

KENTALROOF-A CONFORT 355 T4 0,25kW (27935471AL)

GENERAL DATA



ROOF FAN WITH FOLDING SYSTEM AND ALUMINIUM COWL

MANUFACTURING FEATURES:

- Protection cowl made of anticorrosive treated aluminum easily removable for motor and impeller maintenance thanks to the integrated folding system.
- The design of the cowl with a **rounded shape** is specific to minimize the risk of water ingress due to rain.
- Equipped with a **hinged system** to open the motor-impeller set. This system allows easy maintenance and cleaning of the set without the need to disassemble the entire structure. The opening is possible in 2 inclinations: approximately 45° and 90°, as required by the intervention.
- Structure in anticorrosive galvanized steel and support frame for adaptation to the roof with anti-bird protection grid.
- High-performance, backward-curved blade (reaction) impellers designed to work without scroll. Self-cleaning system, built in galvanized steel treated with anti-corrosion.
- Standard asynchronous squirrel cage motor with IP-55 protection and Class F insulation. Standard voltages 230V 50Hz for single phase motors, 230/400V 50Hz for three phase motors up to 4kW & 400/690V 50Hz for higher powers and 400V 50Hz for 2 speed motors.

APPLICATIONS

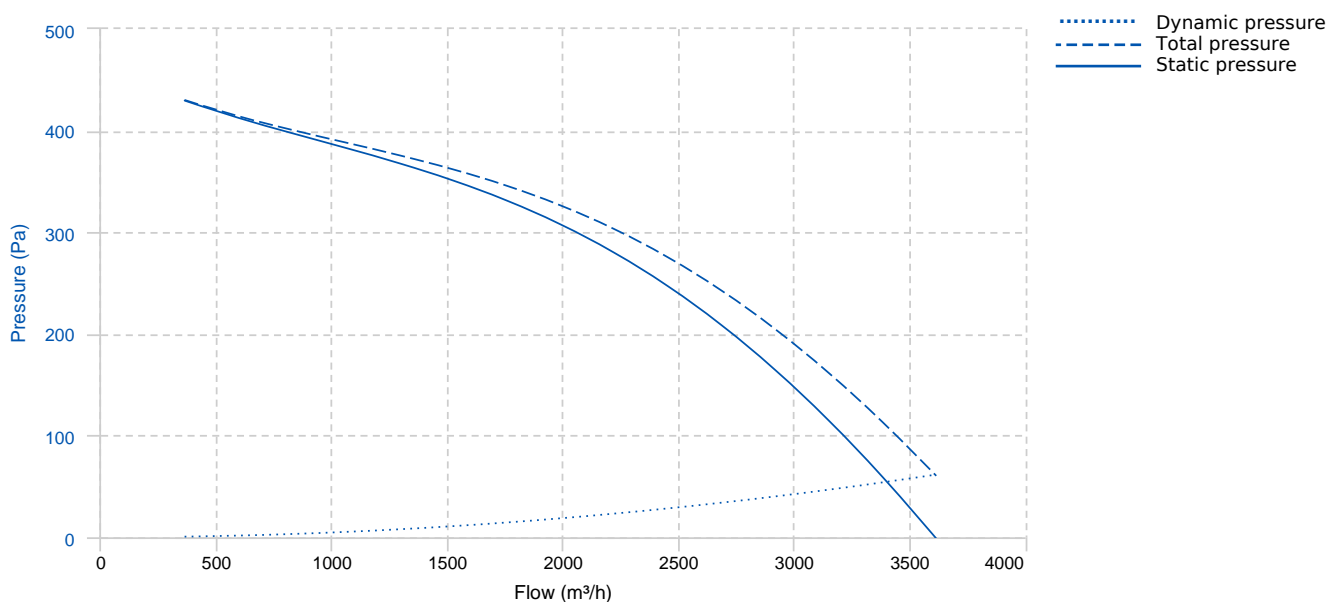
Designed for deck or roof mounting, they are indicated for:

- Smoke extraction.
- Air renewal in all types of buildings and industries.
- Maximum continuous working temperature: transported air 80°C, ambient 60°C to -25°C in three-phase motors.

UNDER REQUEST

- Special voltages.
- Special construction for moving air at 120°C. Serie:

PERFORMANCE CURVE



TECHNICAL DATA

Fan

RPM	1400	Approx. weight	41 kg	Max. Flow	3610 m³/h
-----	------	----------------	-------	-----------	-----------

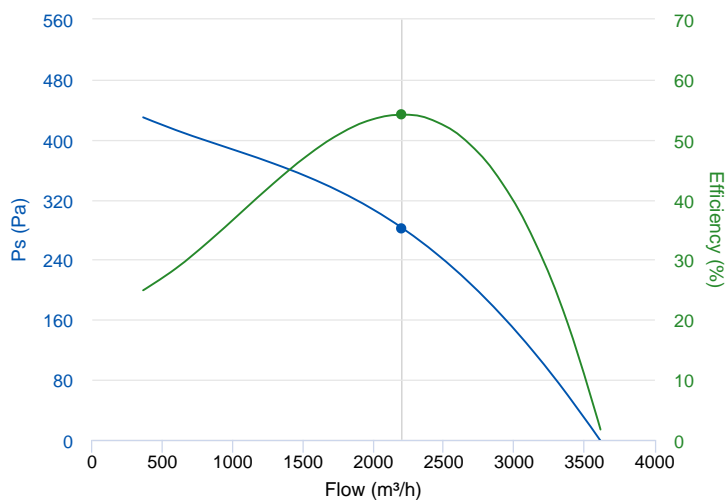
Motor

Power	0,25 kW	RPM	1400	I max. (230V)	1,38 A	I max. (400V)	0,79 A
Size	71	Approx. weight	5.4 kg				

ERP DATA

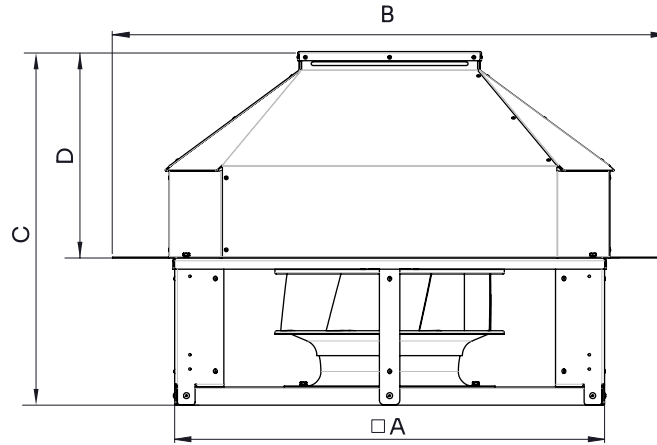
Fan data sheet

Fan type	Unit for non-residential ventilation (LOT 6)	
Typology	Unidirectional	
reports.other	None	
Type of driver	None	
Motor power (kW)	0.25	
	Fan values	ERP Requirements 2018
Max. efficiency (%)	54.14	35.14
Effic. Heat recovery (%)	-	
Pabs (kW)	0.331	
Flow (m³/h)	2202.75	
Static pressure (Pa)	282.28	
Speed (m/s)	6.18	



	Fan values	ERP Requirements 2018
SFP (W/m ³ /s)	540.56	

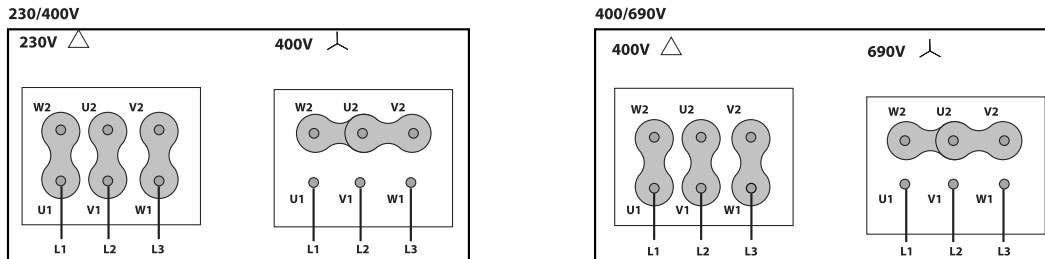
DIMENSIONS



Dimensions (mm)

A (int)	662	B	860	C	624.5	D	365
---------	-----	---	-----	---	-------	---	-----

WIRING DIAGRAM



ACCESSORIES



SAFETY SWITCH
INT 25 3P A
REF: INT253PA



CONNECTION FLANGE
AC 350
REF: 960003211



CIRCULAR SILENCER
SIL-C 355/355
REF: 960355355



CIRCULAR SILENCER
SIL-C 355/710
REF: 960355071



CIRCULAR SILENCER
SIL-CN 355/532
REF: 961355532



CIRCULAR SILENCER
SIL-C 355/532
REF: 960355532



CIRCULAR SILENCER
SIL-CN 355/355
REF: 961355355



CIRCULAR SILENCER
SIL-CN 355/710
REF: 961355071



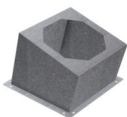
CIRCULAR-CIRCULAR ANTI-VIBRATION FLANGE
BAD 10 (Ø350)
REF: 960003460



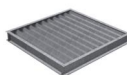
FREQUENCY SPEED CONTROLLER
SFC 230 I 2,5A *
REF: SFC230I003



FREQUENCY SPEED CONTROLLER
SFC 400 III 1,2A *
REF: SFC400III1



INCLINED ROOF FAN SUPPORT
BTI 640
REF: A-50870640XX



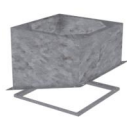
DEPRESSION DAMPER (HORIZONTAL or VERTICAL PLACEMENT)
CMP-HUT 500x510
REF: CMPHUT5051



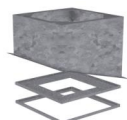
KENTALROOF VERTICAL DISCHARGE
KV KENTALROOF 355
REF: KVKNTR355



BTI + ACMP MOUNTED
BTI+ACMP 640
REF: BTIACMP640XX

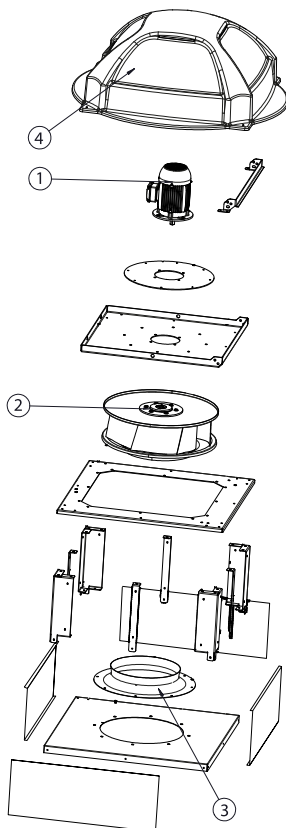


BTI + AMC MOUNTED
BTI+AMC 640
REF: BTIAMC640XX



BTI + ACMP+AMC MOUNTED
BTI+ACMP+AMC 640
REF: BTIACMPAMC640XX

SPARE PARTS



	Code	Model	Qty
1	721001126	MOTOR 0,25kW T4 B5 230/400V	x1
2	R-R63D1L355-14	IMPELLER R63D1L355x100x14 LG	x1
3	R-BAD355PK1	INLET CONE ED11P 355	x1
4	R-279404478A	ROOF COWL KEN. 355-400 (AI)	x1